

# **NORTHERN INTEGRATED SUPPLY PROJECT**

---

**Brian Werner**

**NISP Public Affairs Coordinator**



# **Water Literate Leaders of Northern Colorado**

---

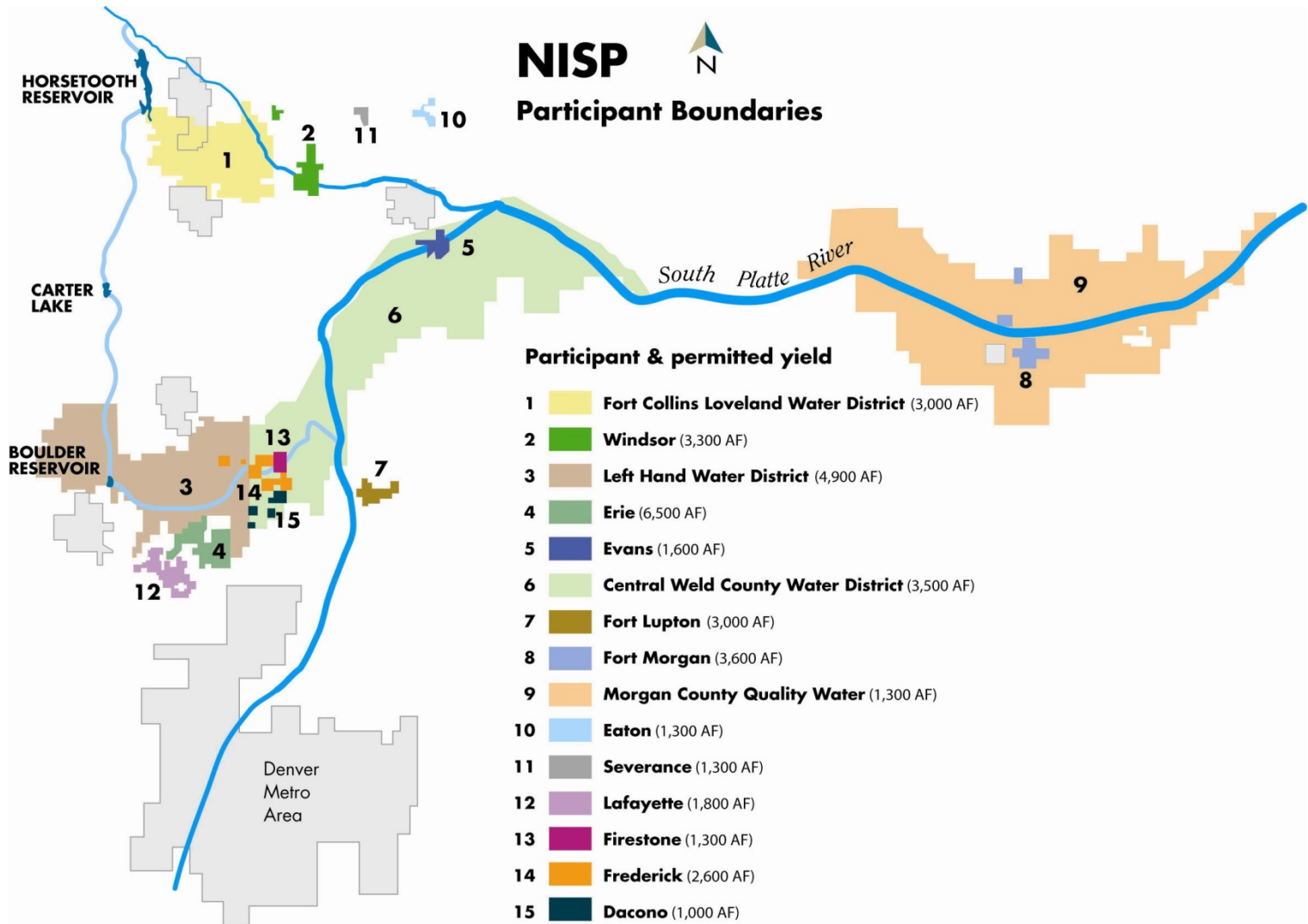
**May 10, 2018**

# NISP proposal

- Glade and Galetton reservoirs
  - Also: pipelines, two pump plants, canal improvements
- 40,000 AF/year new yield
- 15 municipal providers
- Est. cost: \$1.1 billion
  - \$20 million spent to date



# 15 participating providers





## Glade Reservoir

170,000 Acre-feet

U.S. Highway 287  
Realignment

Poudre Valley Canal

Wellington



## Galeton Reservoir

45,600 Acre-feet

SPWCP  
Pipeline

NISP Delivery  
Pipeline

Larimer & Weld Canal

Fort Collins

Horsetooth  
Reservoir

South Platte Water  
Conservation Project

Severance

Eaton

Windsor

New Cache Canal

Loveland

Greeley

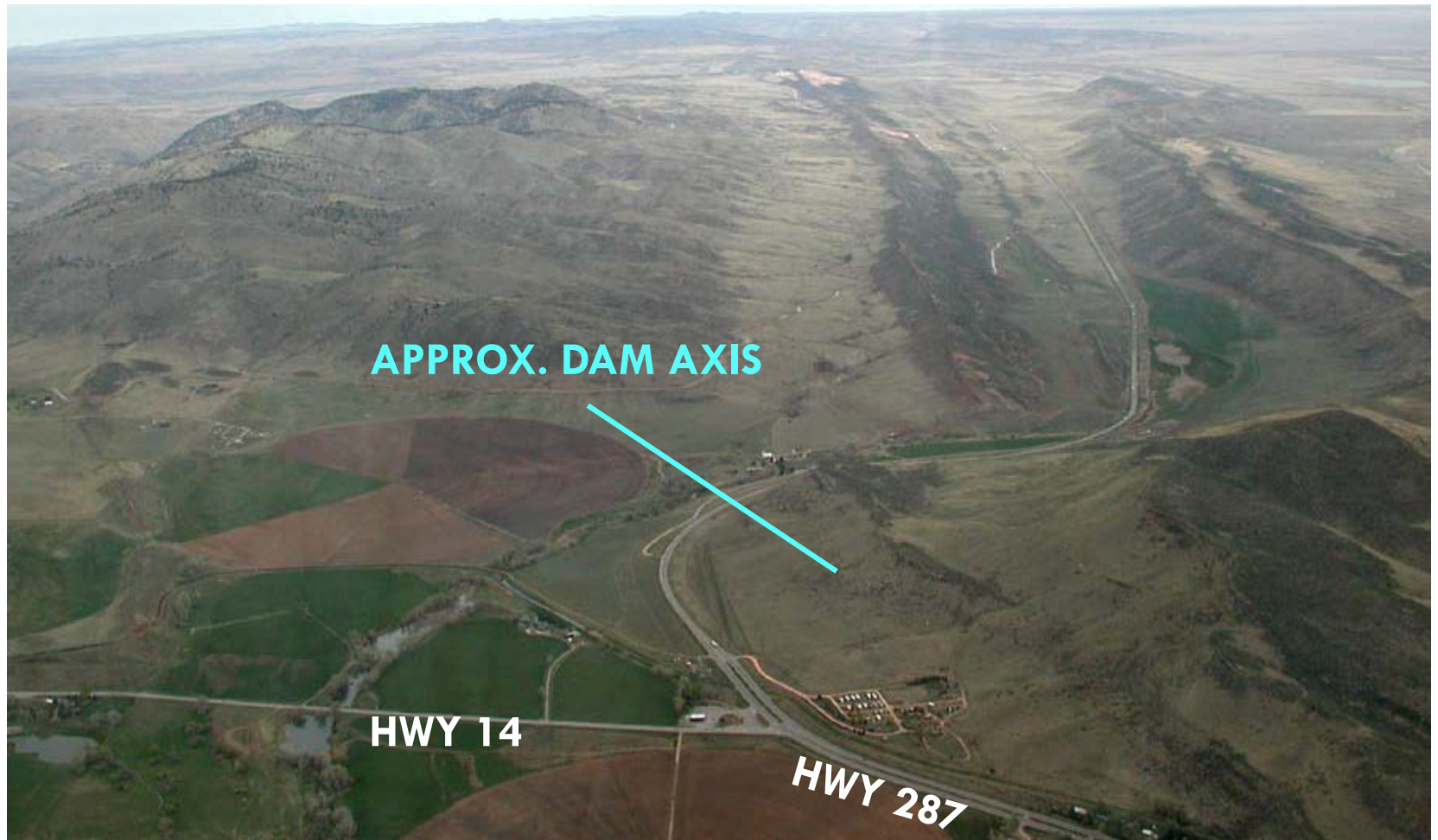
Cache la Poudre River

Big Thompson River

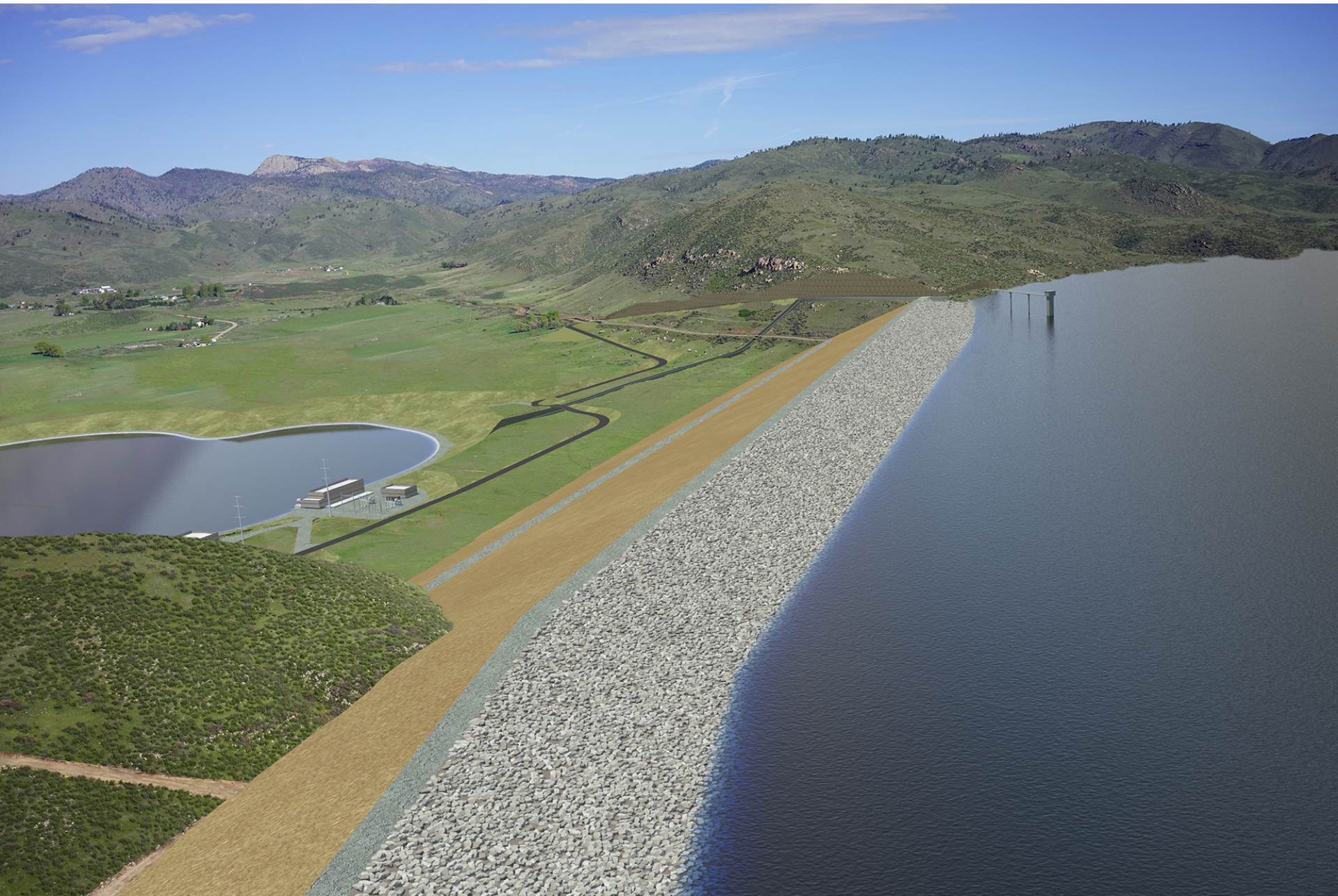
South Platte River



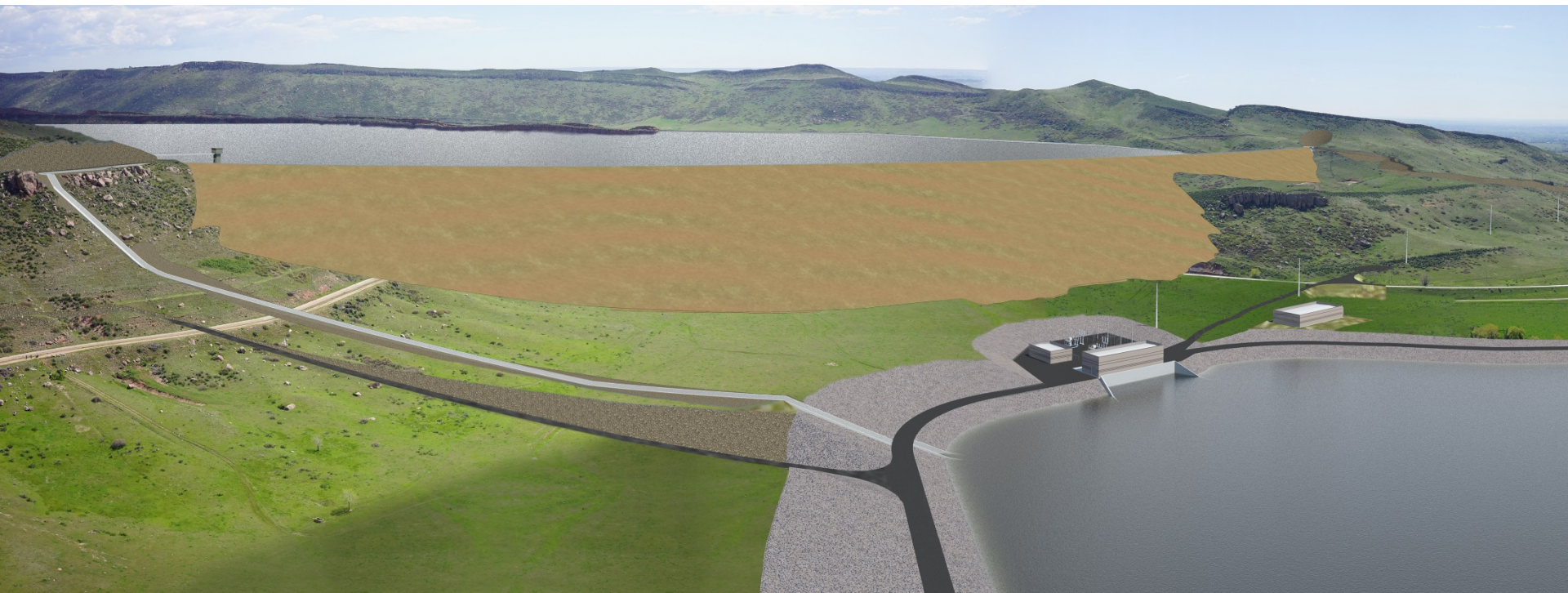
# Glade Reservoir Site







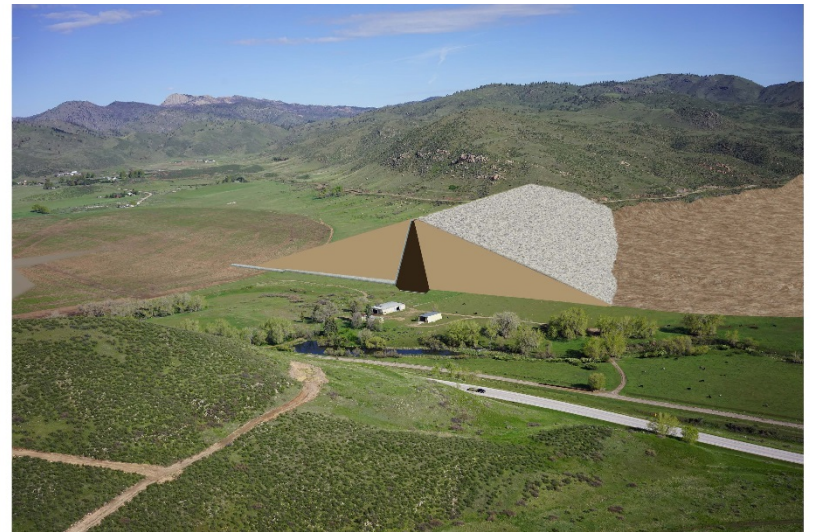






# Glade – By the Numbers

- 170,000 AF of storage (Horsetooth = 156,000 AF)
- 270 ft. tall dam
- 1700 surface acres (Horsetooth = 1900)
- 40,000 AF of firm annual yield



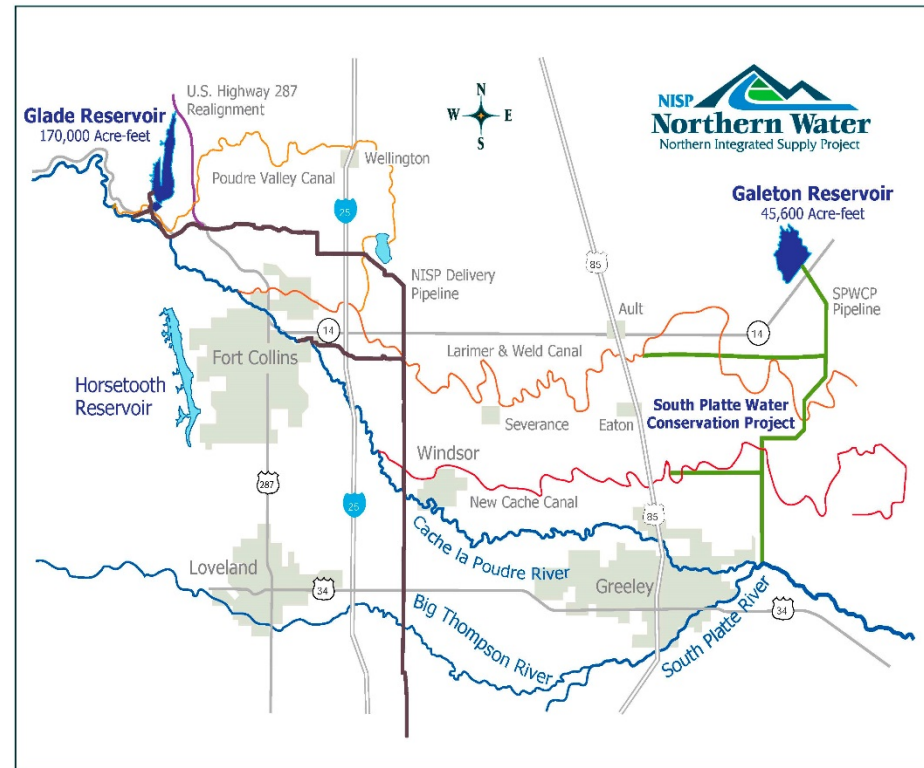
# South Platte Water Conservation Project

---



# Galeton Reservoir

- 45,600 AF capacity
- 200 cfs diversion from South Platte River
- Deliveries to New Cache, Larimer & Weld
- Partnership with Ag









©Google Earth

# Mitigation & Enhancement

---



# The Process

---

- Federal permitting process identifies impacts
- Develops plan to avoid, minimize or mitigate those impacts
- Mitigation and enhancement plan
  - Colorado Water Conservation Board –Sept. 2017
  - Colorado Parks and Wildlife Commission – Sept. 2017
  - Gov. Hickenlooper state approval – Nov. 2017

# Streamflow commitments

---

- NISP will not divert water during low flow periods on the Poudre River
- 18 cfs in the winter and 25 cfs in the summer will be released from Glade Reservoir to keep a live river year-round through Fort Collins
- Bypass and fish passage structures will be built at four diversion dams through Fort Collins and at the diversion dam near the canyon mouth

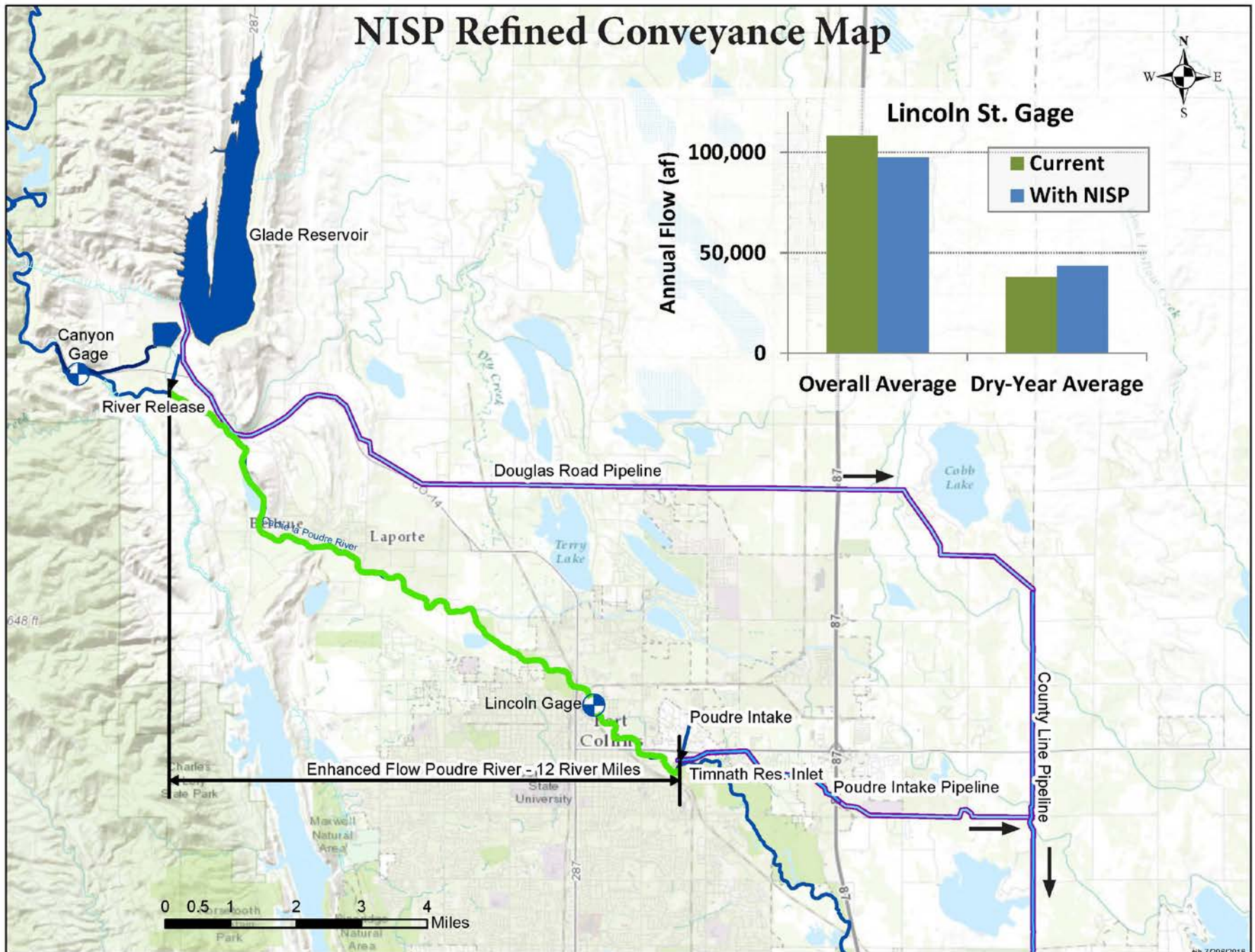
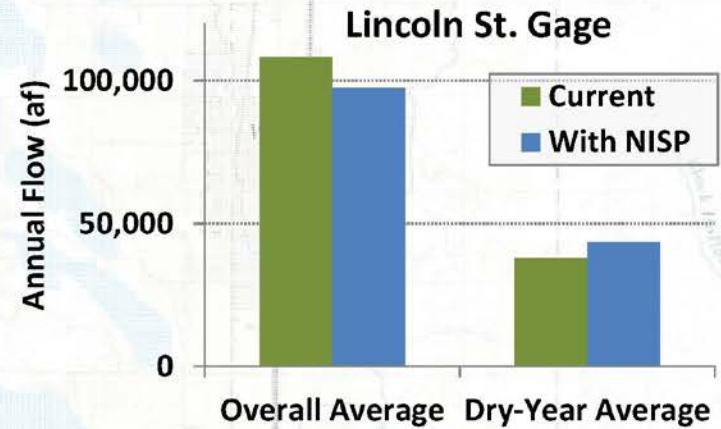
# Refined Conveyance Facts

- Proactive move by NISP participants to address impacts in the environmental permitting process and public comment period
- Enhances aquatic habitat in a 12-mile reach downstream of the canyon creating a tailwater fishery below Glade Reservoir





# NISP Refined Conveyance Map



# Stream channel commitments

---

- Colorado Parks and Wildlife and others will develop a stream channel improvement plan
- A peak flow mitigation program under development will ensure continued beneficial flushing flows on the Poudre River
- More than \$8 million committed for channel and riparian vegetation improvements

# Site commitments

---

- ❑ Recreation at Glade Reservoir, similar to Horsetooth Reservoir
- ❑ Continued access to public lands west of Glade Reservoir and expansion of protected big game habitat
- ❑ Create wetlands and Preble's Jumping Mouse habitat at or near Glade Reservoir and other NISP facilities



# Timeline

---

# NISP timeline

---

- Federal permitting began – 2004
- Draft EIS released – 2008
- Supplemental DEIS released - June 2015
- State Fish and Wildlife Mitigation Plan – Fall 2017

# NISP Timeline

---

- Final EIS expected - June 2018
- Water Quality 401 permit – 2019
- ROD expected in 2019



# NISP Timeline

---

## Design and construction

- Preliminary design is underway
  - 2 years for final project design
- Construction projected to start in 2021/22 with four years to build

# Questions?

---

Thank you!